

WASHINGTON STATE CHAMPIONSHIPS

PRESENTED BY TOUR DE BLOOM

August 19-20, 2023

This race will be conducted in accordance with the rules and regulations set for by USA Cycling in their current Rulebook. Racer's equipment shall conform to the regulations for 'Time Trial' races as stipulated in Chapter 3, section E of the USA cycling rulebook.

Event Permitted Under USAC #6070

Race Director: Ace Bollinger

Phone: 509-679-5003

E-Mail: tdbace@gmail.com

Categories Racing:

MAD RIVER HILL CLIMB

Category	Distance	Prizes & Payout
M 1/2	12 miles	Medals for top 3, 1k cash, WSBA Championship Jerseys with 10 registered.
W 1/2	12 miles	Medals for top 3, 1k cash, WSBA Championship Jerseys with 10 registered.
M 3	12 miles	Medals for top 3, WSBA Championship Jersey with 10 registered
W 3	12 miles	Medals for top 3, WSBA Championship Jersey with 10 registered
M 4	12 miles	Medals for top 3, WSBA Championship Jersey with 10 registered
W 4	12 miles	Medals for top 3, WSBA Championship Jersey with 10 registered
M 5	12 miles	Medals for top 3.
W 5	12 miles	Medals for top 3.
Master M 40+ 1/2/3	12 miles	Medals for top 3, WSBA Championship Jersey with 10 registered
Master W 40+ 1/2/3	12 miles	Medals for top 3, WSBA Championship Jersey with 10 registered
Master M 40+ 4/5	12 miles	Medals for top 3, WSBA Championship Jersey with 10 registered
Master W 40+ 4/5	12 miles	Medals for top 3, WSBA Championship Jersey with 10 registered
Master M 50+ Open	12 miles	Medals for top 3, WSBA Championship Jersey with 10 registered
Master W 50+ Open	12 miles	Medals for top 3, WSBA Championship Jersey with 10 registered
Master M 60+ Open	12 miles	Medals for top 3, WSBA Championship Jersey with 10 registered
Master W 60+ Open	12 miles	Medals for top 3, WSBA Championship Jersey with 10 registered
Master M 70+ Open	12 miles	Medals for top 3, WSBA Championship Jersey with 10 registered
Junior M D (9-12)	12 miles	Medals for top 3, WSBA Championship Jersey with 10 registered
Junior W D (9-12)	12 miles	Medals for top 3, WSBA Championship Jersey with 10 registered
Junior M C (13-14)	12 miles	Medals for top 3, WSBA Championship Jersey with 10 registered
Junior W C (13-14)	12 miles	Medals for top 3, WSBA Championship Jersey with 10 registered
Junior M B (15-16)	12 miles	Medals for top 3, WSBA Championship Jersey with 10 registered
Junior W B (15-16)	12 miles	Medals for top 3, WSBA Championship Jersey with 10 registered
Junior M A (17-18)	12 miles	Medals for top 3, WSBA Championship Jersey with 10 registered
Junior W A (17-18)	12 miles	Medals for top 3, WSBA Championship Jersey with 10 registered
Tandem	12 miles	Medals for top 3, WSBA Championship Jersey with 10 registered

PALISADES TIME TRIAL

Category	Distance	Prizes & Payout
M 1/2	40k	Medals. 1k cash and Jerseys with 10 registered.
W 1/2	40k	Medals. 1k cash and Jerseys with 10 registered.
M 3	40k	Medals for top 3, WSBA Championship Jersey with 10 registered
W 3	40k	Medals for top 3, WSBA Championship Jersey with 10 registered
M 4	40k	Medals for top 3, WSBA Championship Jersey with 10 registered
W 4	40k	Medals for top 3, WSBA Championship Jersey with 10 registered
M 5	40k	Medals for top 3
W 5	40k	Medals for top 3
Master M 40+ 1/2/3	40k	Medals for top 3, WSBA Championship Jersey with 10 registered
Master W 40+ 1/2/3	40k	Medals for top 3, WSBA Championship Jersey with 10 registered
Master M 40+ 4/5	40k	Medals for top 3, WSBA Championship Jersey with 10 registered
Master W 40+ 4/5	40k	Medals for top 3, WSBA Championship Jersey with 10 registered
Master M 50+ Open	40k	Medals for top 3, WSBA Championship Jersey with 10 registered
Master W 50+ Open	40k	Medals for top 3, WSBA Championship Jersey with 10 registered
Master M 60+ Open	40k	Medals for top 3, WSBA Championship Jersey with 10 registered
Master W 60+ Open	40k	Medals for top 3, WSBA Championship Jersey with 10 registered
Master M 70+ Open	40k	Medals for top 3, WSBA Championship Jersey with 10 registered
Junior M D (9-12)	20k	Medals for top 3, WSBA Championship Jersey with 10 registered
Junior W D (9-12)	20k	Medals for top 3, WSBA Championship Jersey with 10 registered
Junior M C (13-14)	20k	Medals for top 3, WSBA Championship Jersey with 10 registered
Junior W C (13-14)	20k	Medals for top 3, WSBA Championship Jersey with 10 registered
Junior M B (15-16)	40k	Medals for top 3, WSBA Championship Jersey with 10 registered
Junior W B (15-16)	40k	Medals for top 3, WSBA Championship Jersey with 10 registered
Junior M A (17-18)	40k	Medals for top 3, WSBA Championship Jersey with 10 registered
Junior W A (17-18)	40k	Medals for top 3, WSBA Championship Jersey with 10 registered
Tandem	40k	Medals for top 3, WSBA Championship Jersey with 10 registered

Payout Schedule

	1 st	2 nd	3 rd	4 th	5 th
Mens Cat 1 & 2	\$500	\$200	\$150	\$100	\$50
Womens Cat 1 & 2	\$500	\$200	\$150	\$100	\$50

For full payout, men and women 1/2 categories must have at least 10 racers per category before 12PM August 15th

Only WSBA members (cyclists who live in Washington, Idaho, Oregon, or Alaska, and have an active WSBA membership) are eligible to win the State Championship. Non-WSBA racers are welcome to attend but will not be awarded the Championship jersey. Cash awards will be awarded regardless of WSBA standing.

This event will be the Washington State Bicycle Association (WSBA) State Championships, as authorized by USA Cycling:

7J. State Championships 7J1. State Championships are allocated by the Local Associations to race directors based on the criteria that the LA or its administrator shall determine. Local Associations may combine several states into an Association, Regional or District Championship. 7J2. Classes and Categories (a) USA Cycling encourages State Championships to follow the same formats for disciplines and age groups as are used for National Championships. (b) Local Associations may offer State Championships for specific categories or events that would not be offered at a National Championship. (c) Local Associations may offer different combinations of classes and categories than would be found at a National Championship. However, women are not eligible for medals in men's events. 7J3.

Eligibility: (a) To be eligible for a State Championship jersey or medal, a rider must hold a current USA Cycling annual license and reside in the state as shown on his license. (b) State Championships are open to US Citizens and permanent residents (green card) with a USA Cycling annual license. (c) Members of UCI road teams are not eligible road championships unless there is a separate class for them. (d) At the option of the Administrators, State Championships may include riders who are ineligible for the championship but championship medals will be awarded only to riders who are eligible. (e) When a local association comprises more than one state, all riders in the local association are eligible for at least one State Championship, depending on which states offer them. Any questions regarding residency will be determined by USA Cycling.

Race Numbers

- Race numbers will be provided by the race and handed out at pre-race check-in.
- Riders racing both events can use the same number for both races
- Number placement is different for each race – see below.

MAD RIVER HILL CLIMB

All racers are required to wear their number of their **right side**, as pictured below. Numbers should be positioned between the rider's shoulder and hip, clearly visible from the side as shown below:



PALISADES TIME TRIAL

All racers are required to wear their number on the **left side**. Numbers should be positioned between the rider's shoulder and hip, clearly visible from the side.



- Helpful tips on how to pin your number on: <https://www.trainerroad.com/blog/what-every-racer-should-know-about-number-pinning/>

Start Times:

MAD RIVER HILL CLIMB

- Check in opens at 4PM
- Mass start by category, with the first group starting at 5PM
- A podium presentation will be held at [Wenatchee Valley Brewing](#)
 - Beer and pizza provided when you show your race number

PALISADES TIME TRIAL

- Start times will be emailed on Saturday evening (~8PM) and posted on wenatcheevalleyvelo.org
- First racers will start at 7 AM
- Racers will be spaced with 30 second intervals

Categories will start in the following order:

1. Junior D
2. Junior C
3. Junior B
4. Junior A
5. Men 70+ Open
6. Women 60+ Open
7. Men 60+ Open
8. Women 50+ Open
9. Men 50+ Open
10. Women 40+ 4/5
11. Men 40+ 4/5
12. Women 40+ 1/2/3
13. Men 40+ 1/2/3
14. Women 5
15. Men 5
16. Women 4
17. Men 4
18. Women 3
19. Men 3
20. Women 1 & 2
21. Men 1 & 2

Course Information

MAD RIVER HILL CLIMB

The race course is located on the [Mad River Road](#), near the town of Ardenvoir on the Entiat River Road. From Wenatchee, head north on Highway 97A and turn left onto the Entiat River Road. Proceed along the Entiat River Road for approximately 12 miles and turn left onto the Mad River Road. This start location and finish are fairly remote. There will be no services immediately available and racers should be prepared with water and supplies. Outhouses will be available at the start.

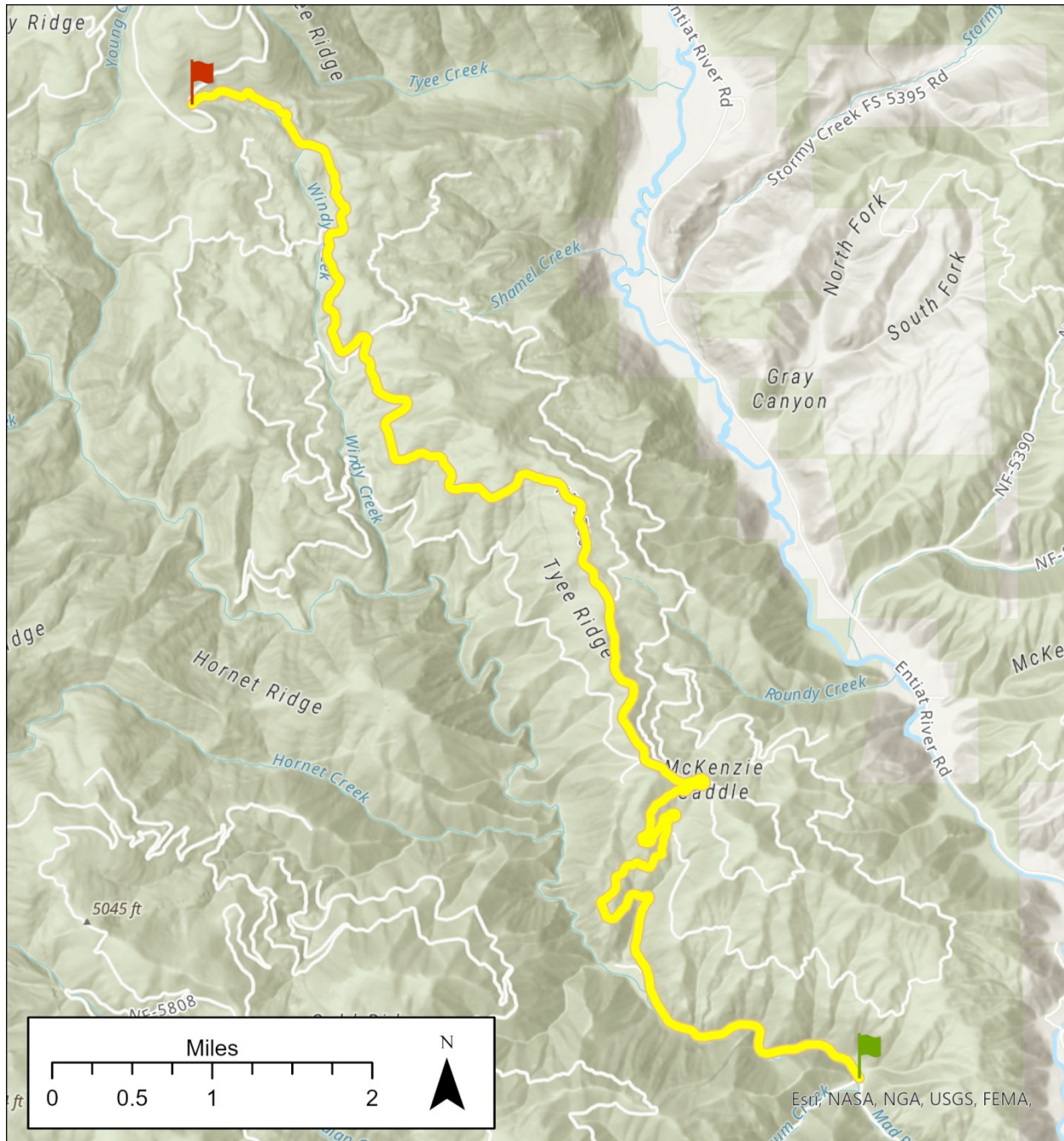
DIRECTIONS TO START:



COURSE MAP

The Mad River Hill Climb begins along the banks of the Mad River and climbs almost 4,000 feet over 12 miles, pitching up to over 20 percent. The climb features a relatively steady grade that averages 5%, the steepest sections come at the switchbacks. The course approximately follows this Strava segment: <https://www.strava.com/segments/2592837>

Neutral water will be provided at mile 7 on the course.



PALISADES TIME TRIAL

The race course is located along the Palisades road, heading east from its [intersection with Highway 28](#). The course is a 20k out and back, (40k total distance) with approximately 400 feet of elevation gain on the outbound portion, punctuated by a couple kicker climbs.

The course basically follows this Strava segment: <https://www.strava.com/segments/26458503>

Parking for warm up will be on the siding roads on the east side of the highway at the intersection of Highway 28 and Palisades Road (A-frame signs will indicate parking/warm-up area):



COURSE MAP AND ELEVATION PROFILE

